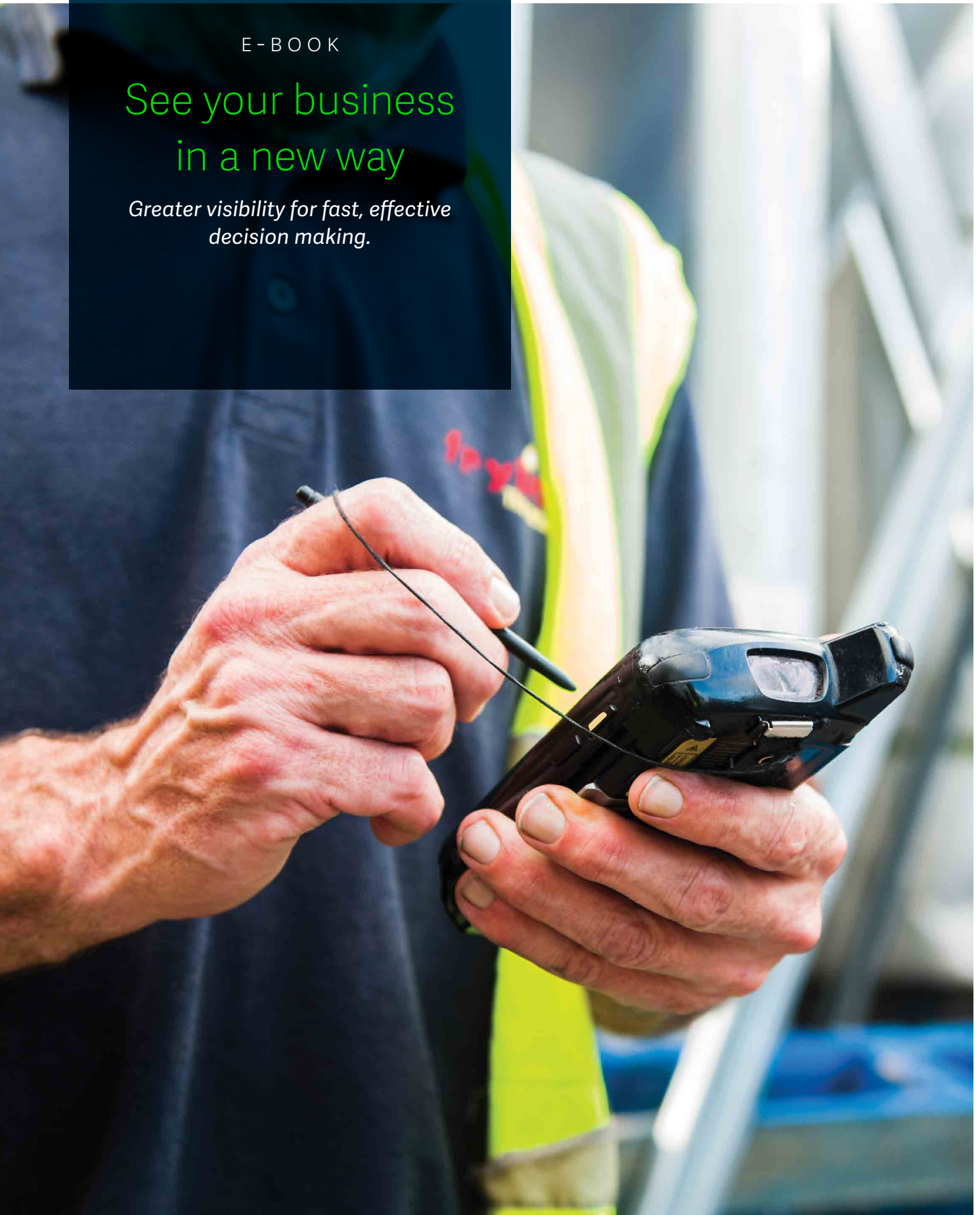


E-BOOK

See your business in a new way

*Greater visibility for fast, effective
decision making.*



Sage 300cloud

- *see your business
in a new way*

Sage 300cloud brings data visibility and real-time access across an entire business without the costs or complexity of traditional enterprise resource planning (ERP) software. Whether you are operating from one location or multiple locations around the world, Sage 300cloud can easily manage your finances, operations and inventory, source, and report on your key performance indicators.

Sage 300cloud allows you to:

- Break down departmental silos for companywide transparency and improved collaboration.
- Tap into a real-time, unified view of your company's finances and operations.
- Reduce inefficiencies and redundancies so you can optimise company performance and productivity.
- Integrate front to back office processes such as marketing, sales and customer service.
- Work anywhere and anytime.
- Easily manage your finances and remain compliant with government regulations such as GDPR and Australian taxation.

Anytime, anywhere mobile access Sage 300cloud offers anytime, anywhere, and any-device access to business and transactional data, critical to supporting an increasingly mobile and geographically dispersed business.



Reimagine your business with Sage 300cloud

The preferred solution for tens of thousands of companies across the globe, Sage 300cloud connects the most important aspects of your growing business, including:

- Financials
- Operations and inventory
- Project and vendor management
- Business intelligence and reporting
- Sales, marketing and customer service

Imagine a world where your business can process orders, fulfill orders on time, make and accept payments, reconcile your books across multiple companies and currencies, pay employees, and manage projects, all with one trusted solution. Welcome to Sage 300cloud.

The advantages keep coming. Sage has an extensive network of Independent Software Vendors whose add-on solutions extend Sage 300cloud ever further to meet the specialised needs of your business.



Take the complexity out of managing your finances

With Sage 300cloud, you will have an accurate, real-time understanding of your financial position, whether it's cash flow, receivables, or payables across multiple locations, companies, currencies, and international borders.

Configurable, simple-to-use, and accessible anytime, anywhere, Sage 300cloud helps you stay on top of your business and address financial issues before they become real problems.

Sage 300cloud helps you manage complex finances and remain compliant with government regulations such as Generally Accepted Accounting Practices, General Data Protection Regulation (GDPR) or International Financial Reporting Standards (IFRS).

Powerful yet simple

Keep your general ledger up-to-date in real-time and meet your most demanding budgeting and processing needs to maximise the efficiency and accuracy of your financial data with Sage 300cloud.

- Store up to 99 years of financial data
- Balance your books at every step
- Manage up to ten different account segments
- Print or email reports instantly
- Configure to your unique processes and preferred practices
- Set up recurring GL entries
- Easily import transactions from other applications or export data

Comprehensive accounting and financial management

- General Ledger
- Accounts Payable
- Accounts Receivable
- Payment Processing
- Bank Reconciliation
- Cheque and form printing
- Multi-currency support
- Consolidated financials across multiple companies
- EFT Processing

Manage payables with ease

Streamline your entire cash flow process and save money. Sage 300cloud ensures rapid entry of vendor invoices, flexible cash disbursement, and cheque reconciliation. You can prioritise payments, negotiate terms, and reduce bad debts.

- Organise vendor records quickly and easily
- Import transactions from other applications
- Automatically distribute invoices to as many general ledger expense or asset accounts you require
- Set up and schedule recurring payables for invoices paid on a regular basis
- Calculate tax for vendor invoices or manually distribute tax
- Print cheques in multiple languages, including English, French, and Spanish

Easily manage multiple companies

When you're keeping track of dealings between multiple entities or subsidiaries, Sage 300cloud reduces the work required for intercompany accounting. Whether you operate as one company, 10 divisions, or 100 entities, you'll reduce redundant data entry and focus on more revenue-generating activities.

Intercompany transactions in Sage 300cloud allows you to enter General Ledger and Accounts Payable transactions affecting more than one company and automatically distribute transactions across two or more companies. You can set up multiple companies, close books, and report results by company or consolidated company.

Simplify international commerce and user support

Managing the complexities of a business across geographies is not easy, but Sage 300cloud makes it far less complicated.

With Sage 300cloud, you can easily manage international commerce across multiple companies or subsidiaries. You'll have tools to easily maintain an unlimited number of currencies and exchange rate schedules, update exchange rates daily, and post gains or losses from currency fluctuations.

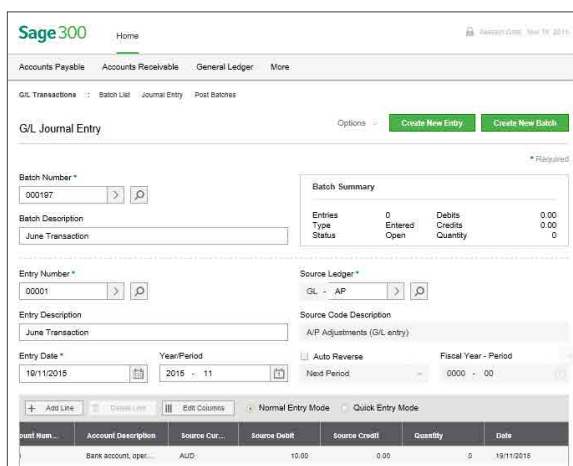
Multi-language support for English, French, simplified and traditional Chinese, and Spanish is included with Sage 300cloud and translatable for additional languages throughout the system.

Manage and track your fixed assets

The Fixed Assets add-on* can be added to Sage 300cloud to give you total control over the entire fixed asset lifecycle and ensure that your company is always in regulatory compliance. The add-on offers integration for Accounts Payable/Purchase Order asset creation and automated General Ledger postings. The integration provides a comprehensive fixed asset inventory and tracking solution.

Bank reconciliation in minutes

With Sage 300cloud, you can quickly and accurately reconcile your bank accounts and perform banking transactions with pinpoint accuracy.



Ship orders on time, manage inventory across multiple locations

With Sage 300cloud, you'll delight customers, vendors, and your own employees by integrating disparate processes across multiple warehouses, inventory, production, and service departments. Faster, more accurate fulfillment results in satisfied customers, quicker payments and much greater profitability.

Efficiently manage your inventory

Assert control over your inventory processes and reduce carrying costs while delivering orders on time. With Sage 300cloud, you can easily take charge of inventory receipts, shipments, returns, and adjustments with multi-location inventory tracking capabilities.

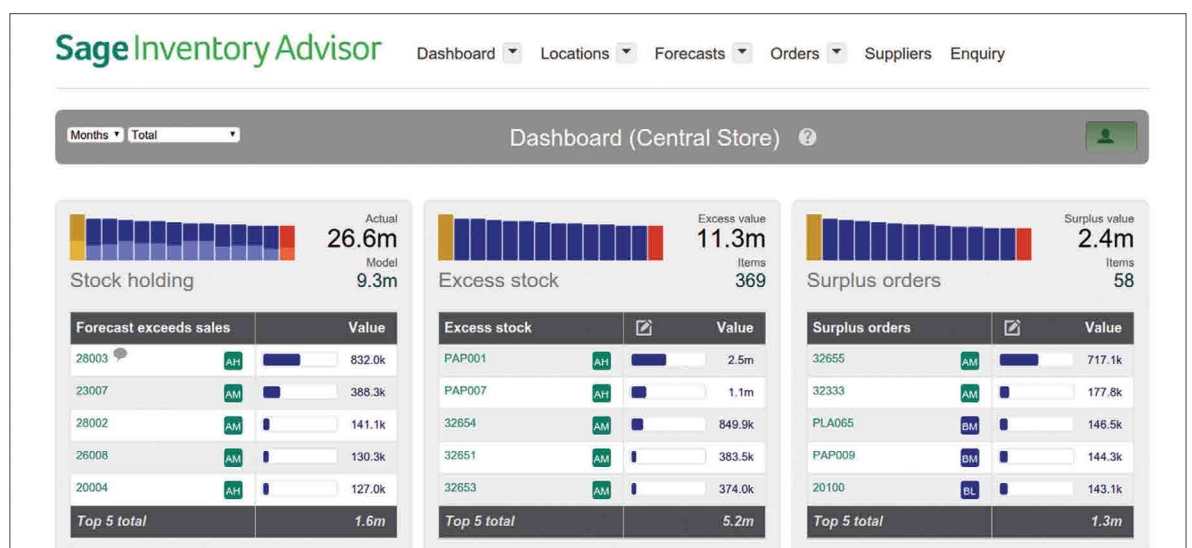
With easily accessible, real-time information, make better business decisions regarding what merchandise to stock, pricing, discontinued items, and trend analysis to best determine what's selling and what to market.

Sage 300cloud offers real-time visibility to inventory data including receipt, shipping information, returns, disposition of goods, and precise value. It also allows you to obtain detailed, current inventory information on demand.

Optimise your stock levels

Sage Inventory Advisor* provides you with an inventory health check, produces quality forecasts, reduces the time spent on manual tasks, and determines the optimal investment needed to achieve target fill rates. It's optimal for companies with one or more warehouses and 1,000+ SKUs.

*Sage Inventory Advisor is an add-on solution to Sage 300cloud.



“For our advisers, all the client information can be found in one spot. They can see all areas of the business. We’ve managed to reduce duplication and inconsistencies by getting rid of multiple client databases.”

Andrew McPhillips, Chief Technology Officer, Dixon Advisory

Strategically manage every aspect of the distribution cycle with efficiency and control

- Inventory control, forecasting, and optimisation
- Serialised inventory and lot tracking
- Purchase Order
- Order Entry
- Credit Card Processing

Streamline order and shipping processes

Are your accounting or customer service teams overwhelmed with questions on shipment status, billing, item availability, or returns? Are they tracking orders manually and relying on shop-floor or warehouse staff to determine what’s in stock and what can be shipped?

With Sage 300cloud, your employees will be continuously aware of inventory levels and customer account changes such as alternative items. You will eliminate redundant data entry and automate workflow as well as:

- Set up detailed quotes, back orders, cancellations, shipments, and prepayments
- Establish data-entry defaults so you can see customer information quickly
- Gain real-time insight into stock levels, customer details, and shipping information
- See and enter orders in the currency of your customers
- View or print reports of transaction details and sales information
- Track multiple payment schedules and other payment terms

Strengthen vendor relationships, interaction with streamlined purchasing

Make the right decisions sooner by automating - and adding visibility - to every facet of your purchasing process. Sage 300cloud keeps you in sync across process requisitions, purchase orders, receipts, invoices, and returns to save you time. All that transparency means everyone works from the same, real-time intelligence. What better way to keep building stronger relationships with your vendors?

Effectively manage projects and track job costs

Keep projects on schedule and on budget with flexible estimating, tracking, and project billing in Sage 300cloud.

With Sage 300cloud project job costing, you're better equipped to:



Control project costs



Track costs and revenue down to the finest details on every project



Manage contractors and subcontractors



Track and monitor original projections and actuals

All costs, payables, and receivables can roll up to each area of the project. Overhead, equipment, and materials are allocated to ensure the project is on time and on budget.

“One thing that [Sage 300cloud] does particularly well is give us the real-time inventory numbers we need to make informed day-to-day decisions.”

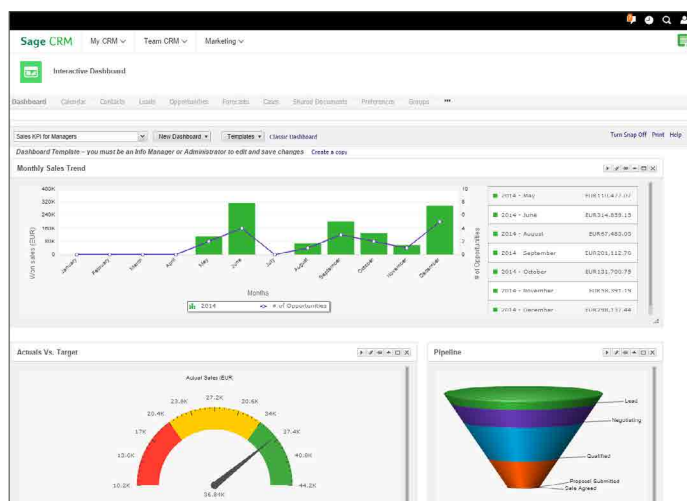
Allan Schmidt, president, Vineland Estates Winery

Win new business, retain and grow existing customer business

With Sage 300cloud and integrated Sage CRM, you can have end-to-end visibility of your sales and marketing activities and a single view of the customer across your organisation. Open up new opportunities for growth with greater insight into business performance, better efficiency and productivity and more effective communications.

You have the tools at your fingertips to find new customers, reduce sales cycles, and build lasting, more profitable relationships.

- Track your sales opportunities from lead generation to close
- Exceed your customers' expectations with outstanding customer service and support
- Plan, execute, and evaluate the success of your marketing campaigns with ease
- Enable your workforce to access customer information anytime, anywhere with mobile access



“The senior management team now have more insightful information on which to base critical business decisions.”

Ayda Hornak, Infrastructure and Innovation Manager, Waivestar

Gain better visibility to make fast, effective decisions

With a 360-degree view of your business, real-time metrics, and the ability to create personalised dashboards and meaningful reports, you gain live visibility across all departments and companies with Sage 300cloud a range of business intelligence tools.

Enhance business insight and visibility

Reporting on the most critical aspects of your business – on demand – is critical to operations, management, and compliance. With Sage 300cloud, you will be able to identify issues before they become major problems for your business.

See everything in real-time

The most important key performance indicators are available on the Sage 300cloud homepage, giving you an up to the moment overview of your financial and operational performance every time you log on.

- Review real-time metrics and create personalised dashboards
- Distribute reports with calculated values or embedded formulas – allowing for quick analysis
- Use prebuilt templates to report on any critical aspect of your company

With Sage 300cloud, you'll have critical information at your fingertips for easier, smarter short- and long-term planning. You can leverage widgets and customisable report templates to report on any critical aspect of your company, so you can properly allocate your resources and increase productivity.

Intelligent reporting

Design, generate, and distribute reports through a common Microsoft Excel® interface on financial and nonfinancial data. Analyse and create reports, filter and aggregate data, drill down to transactions, and automatically schedule and distribute reports. Sage Intelligence has multiple report templates that are provided out of the box.

- Use drag-and-drop formulas to easily create and manage your financial reporting
- Develop in-depth financial, operational, customer, and vendor reports
- Effortlessly consolidate data from multiple companies, divisions, and databases

Improve decision making process using self-service analytics

An innovative and self-service business intelligence solution, Sage Enterprise Intelligence is engineered for ease of use and performance. Sage Enterprise Intelligence's intuitive web user interface and advanced features provide instant access to enterprise-wide information, quickly and securely.

- Immediate access to real-time enterprise information from mobile devices
- Simplify and accelerate the distribution of relevant information across your organisation
- Empower any user to analyse and report on financial and operational data

Solve challenges using Sage 300cloud's extended solutions

Designed for ease of use and low total cost of ownership, Sage 300cloud is an highly functional end-to-end business solution that offers a range of industry specific solutions. Sage 300cloud connects your entire operation with a single, integrated solution that provides you with greater visibility, making it easier to share information and communicate. Below are some of the extended solutions* of Sage 300cloud.

Service Manager, Powered by Technisoft

For service-based businesses, the key to success is a streamlined and efficient call centre that presents all the information quickly to your staff when they need it. Sage 300cloud enables customer information to flow throughout the business – from the call centre to the technicians on the road and ultimately to the customer.

Make your service and maintenance resources work harder with true, centralised accountability that helps you manage the resources, products and services your business offers. Access your data locally or from the field using mobile or web technologies to save time, lower expenses, monitor profitability, increase productivity and most importantly, improve customer satisfaction.

“We wanted a fully integrated system rather than a CRM system bolted on to a finance system as integration would make it easier and faster for the commercial team.”

Jeremy Kann, General Manager, Australian Grand Prix

“Since we implemented [Sage 300cloud], we are saving 20-30 hours each month in accounting tasks, and we have increased revenues.”

Allan Schmidt, president, Vineland Estates Winery

Sage Alerts and Workflows

Alerts & Workflow is your invisible assistant; it automatically identifies and responds to critical business conditions that when left unchecked, can jeopardise the very survival of your business.

- Monitor Inventory activity. Alerts & Workflow auto-monitors not just stock levels, but everything in the lifetime of an inventory item, from initial purchase to delivery, storage, and sale.
- Keep your sales teams on top of their sales, with alerts on quotes about to expire, auto-notify clients and shipment delays.
- Spot errors and exceptions and respond to them effectively. Receive alerts and notifications on your own conditions such as duplicate items, missing email addresses and exceptionally high discounts.
- With pre-configured events, you will be able to get up and running quickly. As well as a wizard-based design engine to create additional events specific to your business needs.

Sage eCommerce

Sage eCommerce helps you drive incremental revenue, increase margins, and improve operating efficiencies by seamlessly extending your Sage ERP platform to your eCommerce platform. The Sage eCommerce platform was built to improve efficiency and let you focus on what is important: your business. The integration eliminates the need for manual order entry, reduces data errors and works 24/7 without the need for constant monitoring.

- High level transparency where your customers can view all online and offline orders that they have placed, order status and shipment status.
- Customers can also view any pending invoices and pay them online. This information is synced directly into Sage 300cloud.
- Intuitive built-in responsive design templates allow you to customise your Sage eCommerce platform with ease.
- Your marketing team gets access to real-time, reliable statistics on the performance of your eCommerce channel.



Level 11, Zenith Tower B, 821 Pacific Highway,
Chatswood NSW 2067

13 SAGE (Australia) or 0800 904 409 (New Zealand)

info.pacific@sage.com

www.sage.com/au