



SYSTRONICS

DOCUMENT MANAGEMENT SOLUTION

for **sage** 300

Powered by Field Extender Enterprise

P.O. Box
50183, Office 3002, ONE By Omnyat Tower,
Future Street, Business Bay, Dubai
+(971) 4 393 0153

A SIMPLE DOCUMENT MANAGEMENT SOLUTION FOR SAGE 300 USERS

Field Extender Enterprise (FE) is an affordable but highly effective document management solution, which features allowing to attach files and keeping hyperlinks of files. FE allows to attach documents (such as invoices, payment vouchers, images, etc.) and other files to any Sage 300 transaction/screen. The information is kept in Sage 300 tables and it can be retrieved by accessing those transactions inside Sage 300 or from a special inquiry screen.

FEDAT - F/E Optional Field Inquiry

File Help

Transaction: I/C Items

Select By: (None) From: (None) To: (None)

Select by Optional Field

Field Set	Optional Field	From	To
IC - IC Item	Picture		No Yes
IC - IC Item	Warranty Agreement		No Yes

Autopopulate Selection

Include Blank Records

Unformatted Item #	Category	Alternate Item Set	Item Number	Description	Allow Item in Web	LINENO	PICTURE	DWARRAN
A11030	A1	1	A1-103/0	Fluorescent Desk L	Yes	1	A11030.jpg	Warranty a5
A11050	A1	0	A1-105/0	13W Mini Fluoresc	Yes	1	A11050.jpg	Warranty a5
A13100	A1	1	A1-310/0	Halogen Desk Ligh	Yes	1	A13100.jpg	Warranty a5
A13200	A1	0	A1-320/0	50W/12V Halogen	Yes	1	A13200.jpg	Warranty a5
A14000	A1	2	A1-400/0	Desk Note Book	Yes	1	A14000.jpg	Warranty a5
A14010	A1	2	A1-401/0	Desk Calendar Pac	Yes	1	A14010.jpg	Warranty a5
A14500	A1	0	A1-450/0	Bulletin Board	Yes	1	A14500.jpg	Warranty a5

Export Close

This inquiry screen allows to search attached documents by transactions and by their key fields.

Benefits

Better reporting and search

The product extends reporting and inquiry capabilities by allowing printing images in Reports and searching using structured data.

Quick reference to attachments

Attachments are available to view with a single click on the Sage 300 screens.

Data safety

The attachments can be optionally saved in the database in which case are a part of standard Sage 300 backups - DB Dump or SQL backup.

External Storage

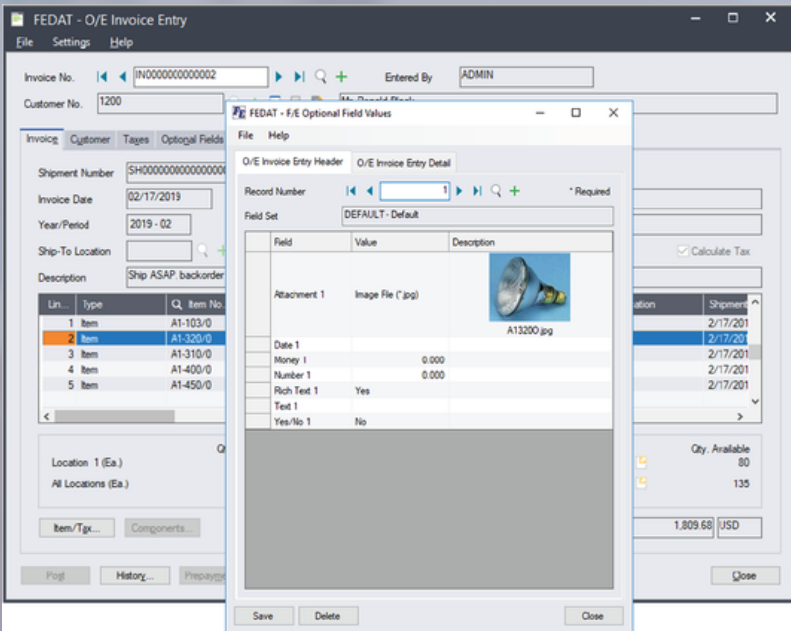
The documents can be kept outside of Sage 300 on local or external drives (on-prem or cloud), including SharePoint. In that case, Field Extender uses the hyperlink option.

Support for 3rd Party SDK applications

The product can be configured to attach electronic documents to transactions and master data of 3rd party SDK add-ons.

The following Document Management requirements are covered by FE

- Attach files
- Centralized filing
- Add structured data (manually)
- Search using structured data
- Download/detach files
- View files from within Sage 300 screens
- Keep attachments in the Sage 300 database
- Keep attachments on external storage



F/E Optional Field Values